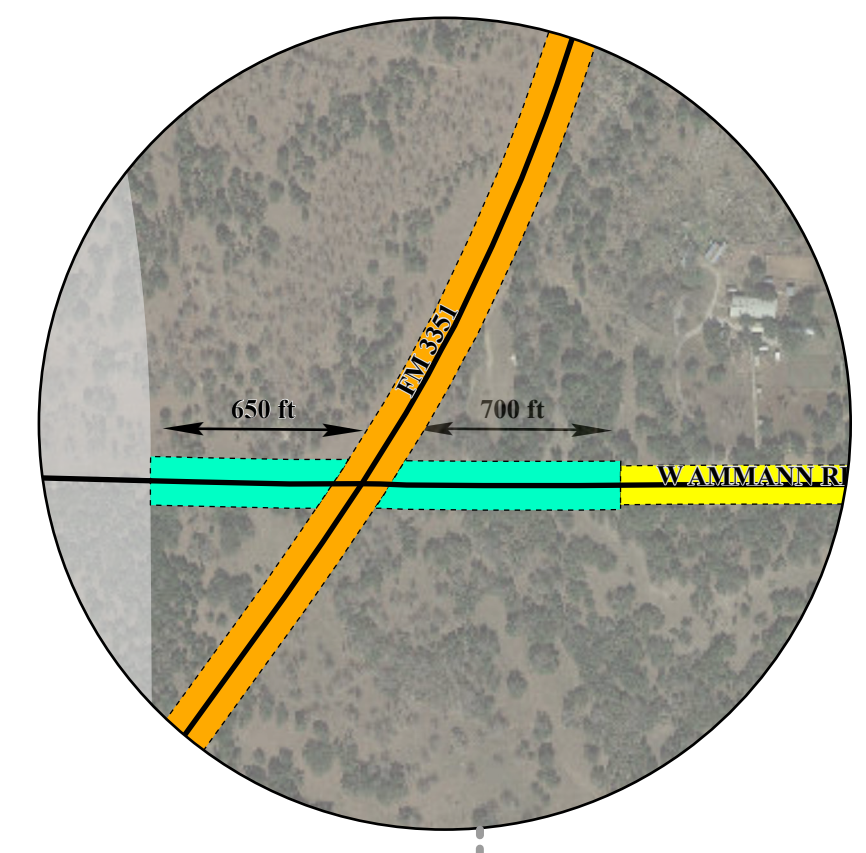
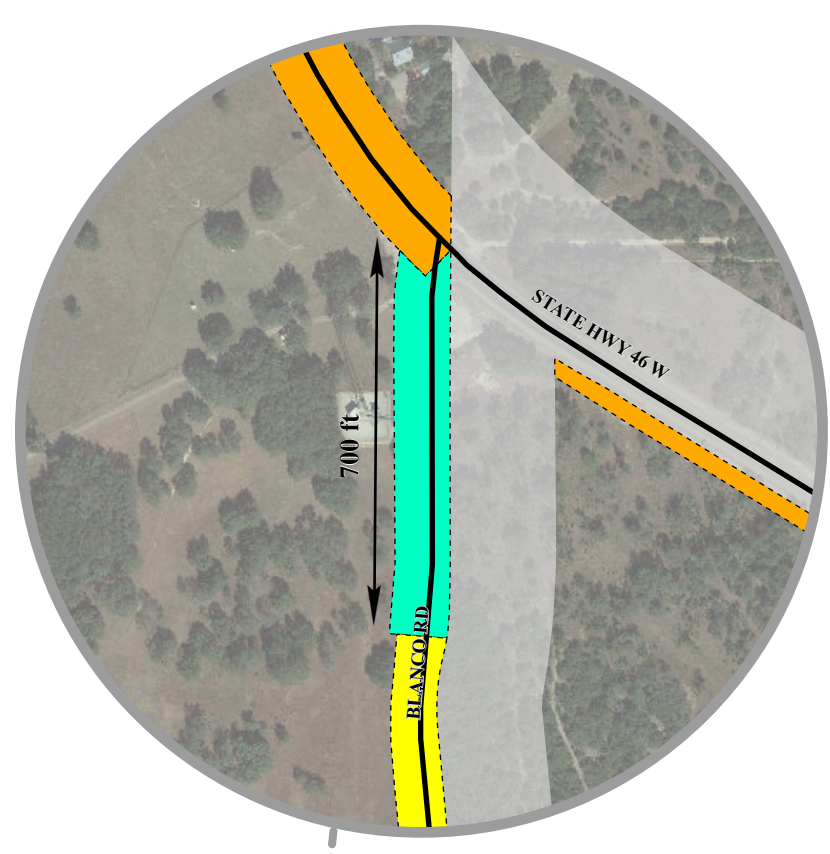
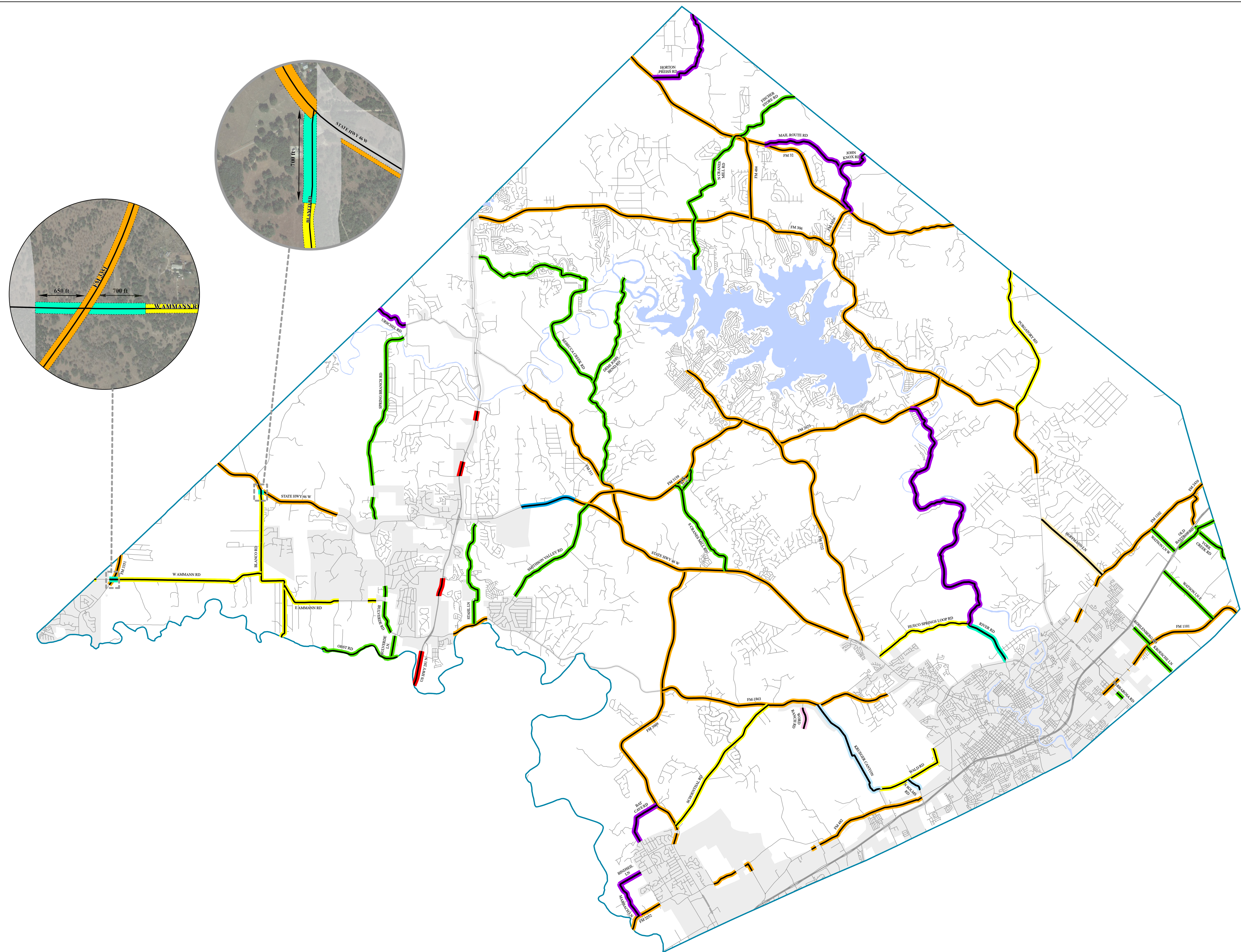
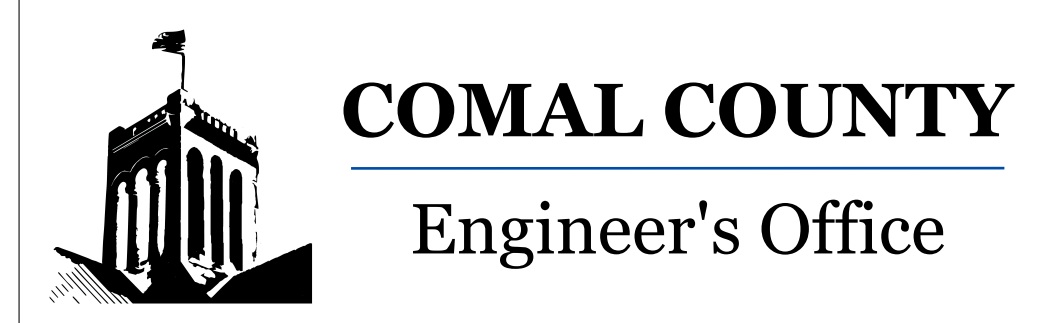


# Comal County Major Thoroughfare Plan



### Legend

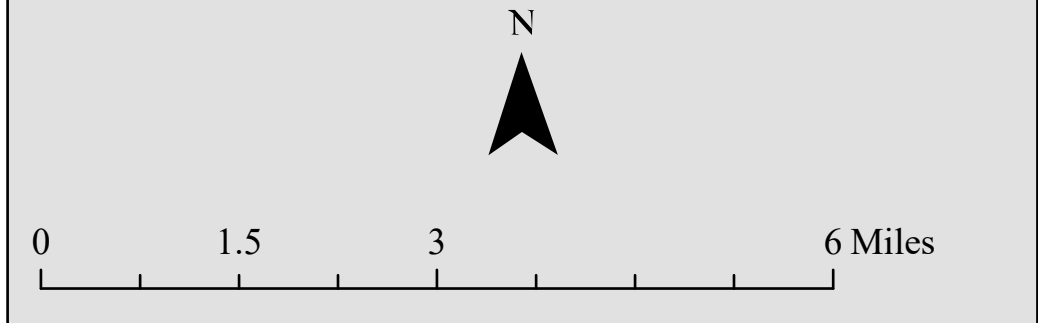
Highway (400')	Rural Collector (80')
Highway (200')	Local Road (60')
Highway (150')	Water Bodies
Highway (120')	Comal County
Rural Collector (150')	Street
Rural Collector (120')	Major Roads
Rural Collector (100')	City Limits
Rural Collector (90')	

#### Revision Notes

Date	Description
7/1/2004	FM 3351 designated as Primary Arterial Type A.
3/24/2005	FM 1863, FM 3009, FM 3159, FM 2722, FM 2673, and FM 306 designated as Primary Arterial Type A.
4/21/2005	N CRANES MILL RD designated as a Collector Road.
10/20/2005	DEMI JOHN BEND designated as a Collector Road.
1/19/2006	S CRANES MILL RD designated as a Collector Road.
8/5/2010	US Hwy 281 removed north of the Guadalupe River. BARBAROSA RD designated as a Collector Road. RITTIMANN RD & OBLATE RD removed.
	Parts of BLANCO RD, BULVERDE RD, E AMMANN RD, FM 1101, FM 1102, FM 1863, FM 2722, FM 3009, FM 3351, FM 482, KRUEGER CANYON, RALPH FAIR RD, SPRING BRANCH RD, STAHL LN, STATE HWY 46, and US HWY 281 removed in incorporated areas.
	KEY RD, BULVERDE LN, BULVERDE RD, OBST RD, YORK CREEK RD, and OLD BASTROP RD designated as a Collector Road.
	Changed FM 1863, FM 2673, FM 2722, FM 3009, FM 3159, FM 3351, and STATE HWY 46 (Parts) to Secondary Arterial Type A.
	Parts of STATE HWY 46 changed to Primary Arterial Type A.
	Parts of STATE HWY 46 and FM 306 removed as no ROW requirements are established.
	Parts of STATE HWY 46 removed from City of Bulverde incorporated areas.
	JOHN KNOX designated as a Local Road.
	Removed parts of SMITHSON VALLEY RD near City of Bulverde.

9/16/2020	Part(s) of FM 306, REBECCA CREEK RD, SPRING BRANCH RD, URSCHEL RD, FM 311, and US HWY 281 removed from the City Limits of Spring Branch.  Part(s) of STAHL LN, FM 1863, US HWY 281, SPRING BRANCH RD, BULVERDE LN, BULVERDE RD, E AMMANN RD, BLANCO RD and STATE HWY 46 removed from the City Limits of Bulverde.  Part(s) of FM 1101, BARBAROSA RD, KRUEGER CANYON, FM 1863, FM 2722, HUECO SPRINGS LOOP RD, FM 1102, KROESCHE LN WALD RD and FM 482 removed from the City Limits of New Braunfels.  Part(s) of FM 2252, BINSEIL LN and FM 3009 removed from the City Limits of Garden Ridge.  Part(s) of FM 3351, RALPH FAIR RD and W AMMANN RD removed from the City Limits of Fair Oaks Ranch.  Part(s) of FM 482 removed from the City Limits of Schertz.  KROESCHE RD, SOLMS RD and KOHLENBERG RD designated as a Collector Road.  RIVER RD designated as a Local Road.  Road naming convention updated.  HOFFMAN LN changed from a 80' to 100' ROW. BLANCO RD changed from a 80' to 120' ROW. The intersection of BLANCO RD and STATE HWY 46 now has a 150' ROW. W AMMANN RD changed from a 80' to a 120' ROW. The intersection of W AMMANN RD and FM 3351 now has a 150' ROW. E AMMANN RD changed from a 80' to a 120' ROW. SCHOENTHAL RD changed from a 80' to a 120' ROW. WORD RANCH RD designated as Highway with a 200' ROW. KRUEGER CANYON changed from a 80' to a 90' ROW. WALD RD changed from a 80' to a 120' ROW. Parts of RIVER RD have changed from a 80' to a 150' ROW. HUECO SPRINGS LOOP RD has changed from a 80' to a 120' ROW. N SOLMS RD changed from 80' to a 90' ROW. PURGATORY RD changed from a 80' to a 120' ROW.
-----------	---

NOTE: This map was updated in coordination with the Texas Department of Transportation and the Alamo Area Metropolitan Planning Organization Regional Thoroughfare Plan Functional Classification for right of way widths.



For information concerning the source of the data, please contact:  
 Comal County Engineer's Office  
 195 David Jonas Dr  
 New Braunfels, TX 78132  
 (830)608-2090

This product is for informational purposes and may not have been prepared for or be suitable for legal, engineering, or surveying purposes. It does not represent an on-the-ground survey and represents only the approximate relative location of property boundaries.